



June 2019

## Mixed Use Zones

Welcome to the *Alberta Land-use Knowledge Network's* new monthly newsletter in which we share information and resources about land use planning in Alberta.

The **Land-use Knowledge Network** was launched in 2011 and the **Land Use Planning Hub** in 2018. These two tools continue to grow and support research-based land use decision making throughout the province

If this newsletter was forwarded to you, please consider **subscribing** to our monthly publication.

Review **past issues** of our newsletter



Source: **OECD**

### Land Use Planning Hub

The **Land Use Planning Hub** is an informal network that supports the implementation of Alberta's regional plans.

## Currently on the Land Use Planning Hub

### Why we plan around watersheds

Alberta is in the process of developing and implementing regional plans for seven regions. The geographical range for each of the plans is based around major watersheds, and then the plans outline the goals and land uses applicable to that region.

### Why we plan around watersheds



Why are watersheds used to set the borders for regional plans?

This question is explored in a **guest post published on the Alberta WaterPortal Blog.**



## Toolkits for carbon neutral communities

Toolkits for sustainable communities include approaches and strategies that are possible for large and small municipalities. Included are toolkits and example strategies from municipalities across Canada to become carbon neutral communities.

## DIY municipal climate resilience plans

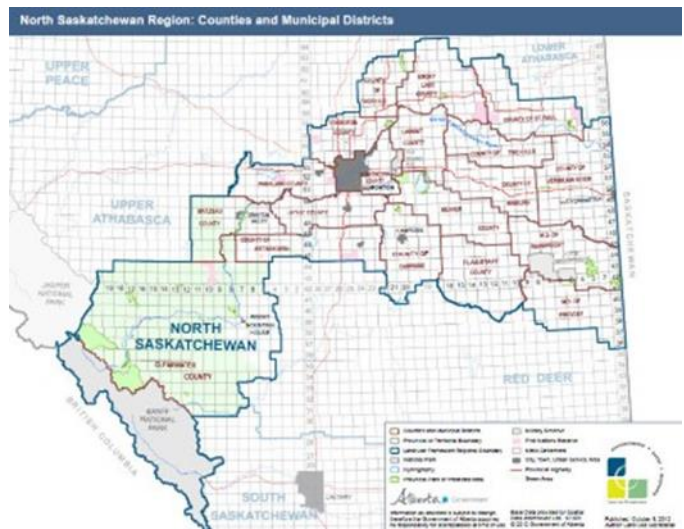
Climate Resilience Express is a free toolkit for Alberta municipalities to ease the process of creating climate change action plans. The toolkit is created by All One Sky Foundation – a non-profit organization that provides education, research and resources on climate change adaptation.



For more information about the Land Use Planning Hub, contact the website's coordinator, [Jeff Wiehler](#)



The North Saskatchewan Region contains a diverse landscape encompassing Rocky Mountain, rolling foothill and prairie parkland ecosystems. The North Saskatchewan Region includes headwaters forests that provide clean water to downstream communities, mountains foothills, and parkland that support a diversity of habitats that provide homes for species at risk and serves as a major source of recreation and tourism.



The North Saskatchewan Regional Advisory Council

Read [Jeff Wiehler's](#) post entitled **Preparing for the next regional plans**

Check out our resource list related to the **North Saskatchewan Regional Planning** process.

**Recommendations Document from the North Saskatchewan Regional Advisory Council**

## Mixed Use Zones

## Land Use Topics

Traditional zoning was developed during a time when factories and many commercial uses were noisy, smelly, and/or hazardous to the public. To protect public health and residential property values, early zoning focused on separating different uses and buffering them from each other to minimize nuisances.

Mixed-use zoning is about blending residential, commercial, cultural, institutional and even industrial uses. These developments utilize high density zoning to increase land-use efficiency and decrease energy consumption and transportation costs. Functional or land-use mix has been seminal to urban design and planning for over 50 years. Mixed-use reduces the need for travel, increases walkability and generates street-life intensity.

Benefits of mixed-use development include:

- greater housing variety and density, more affordable housing (smaller units), life-cycle housing (starter homes to larger homes to senior housing)
- walkable neighborhoods
- reduced distances between housing, workplaces, retail businesses, and other amenities and destinations
- better access to fresh, healthy foods (as food retail and farmers markets can be accessed on foot/bike or by transit)
- more compact development, land-use synergy (e.g. residents provide customers for retail which provide amenities for residents)
- stronger neighborhood character, sense of place (Prosper, 2012)



### City of Edmonton. What is Zoning? How it shapes your neighbourhood and city

This booklet created by the City of Edmonton was designed to give you a basic understanding of what zoning is, and how it shapes your neighbourhood and city. We hope that this knowledge will help you participate in land use decisions around you.

Prepared by the Metropolitan Area Planning Council with support from The Minuteman Advisory Group on Interlocal Coordination (MAGIC) and the Commonwealth's Priority Development Fund

This **Mixed Use Zoning Toolkit** is a basic guide to mixed use zoning and presents the fundamentals you need to plan a mixed-use bylaw:

- What is mixed use?
- What are the benefits to your community? To developers?
- What is the best process to plan mixed use zoning?
- What issues should you consider in designing a bylaw?
- How can you educate the public and address citizen concerns?



### Mixed Use Zoning (scholarly articles)

Prosper, V. (Ed.). (2012) **Livable New York resource manual: Sustainable communities for all ages**. Division of Policy, Research, and Legislative Affairs: New York State Office for the Aging

Department for Communities and Local Government. (2006). **Mixed use development, practice and potential**. Government of the United Kingdom.

Grant, J.L. (2002). **Mixed use in theory and practice: Canadian experience with implementing a planning principle**. Journal of the American Planning Association, 68(1), 7184.

Grant, J., Joudrey, D., & Klynstra, P. (2015). **Next door to the factory: Housing people in modern industrial parks**. Canada Mortgage and Housing Corporation

Dunkley, B. (2002). **Atlanta Regional Commission Quality Growth Toolkit: Mixed-Use Development**

**Land-use Planning Systems in the OECD: Country Fact Sheets** & The Governance of Land Use: Policy Highlights

Read, A. & Mowery, M. (2018). **Zoning and land-use tools in the wildland-urban interface**. American Planning Association



## Spotlighted Organizations

### Alberta Urban Municipalities Association (AUMA)

Founded in 1905, the Alberta Urban Municipalities Association (AUMA) represents urban municipalities including cities, towns, villages, summer villages and specialized municipalities and more than 85% of Albertans. It is a dynamic and evolving association, advocating the interests of members to the provincial and federal orders of government and other stakeholders.



**The Rural Policy Learning Commons (RPLC)** is a \$2.5M partnership grant funded by the Social Sciences and Humanities Research Council of Canada (SSHRC) with the Rural Development Institute (RDI) and Brandon University. Major objectives of the RPLC are to build rural capacity and strengthen relationships to inform rural research and policy. Some members focus on provincial and regional research while others concentrate on international comparative analysis through working relationships among institutions and individual partners.

The **Land-use Knowledge Network** is a repository of a wide variety of resources to support your land use and planning research. Take a look at these items...

## Resources on the LuKN

Video: **Business Revitalization Zones. Presentation** (Laurene Viarobo)

Video: **The challenges of infill development:** Part 1. Presentation by Chris Dulaba

Video: **The challenges of infill development:** Part 2. Presentation by Chris Dulaba

Video: **The challenges of infill development:** Part 3. Presentation by Chris Dulaba

Video: **The challenges of infill development:** Part 4 (Q&A). Presentation by Chris Dulaba

**From Disaster to Renewal: The Centrality of Business Recovery to Community Resilience**

**2013 Report on the State of Canada's Cities and Communities**

Kauffman, R. (2019). **Climate change and the law: Part one – an introduction to mitigation in Alberta.** Edmonton, AB: Environmental Law Centre (Alberta) Society

## EVENTS

If you have an event that you would like to see included in our monthly newsletter, please email [Linda](#) with the details.

### June

*Early bird rates available now*

**Canada's Oil Sands Innovation Alliance (COSIA): 2019 Oil Sands Innovation Summit**

3-4 June, Calgary

**Eco-Buffer Planting Workshop**

5 June, Vermillion

**Blindman River Community Planting Day**

7 June, Bentley

**River Revival Vegreville**

8 June, Vegreville

**3rd Annual VegFest**

15 June, Calgary

Webinar: **The Theory, Practice and Potential of Regional Development: Key Learnings & Policy Recommendations**

19 June, Online

**AWES 2019 Annual General Meeting**

21 June, Jossard

**Building for the Berries**

26 June, Parkland County

### September

**International Association of Transportation Regulators (IATR) 32nd Annual Conference: Regulatory Roundup**

22-25 September 2019, Calgary

*Save the date*

**AUMA 2019 Convention and AMSC Trade Show**

25-27 September, Edmonton

### October

*Earlybird rates until June 30*

**Canadian Rural Revitalization Foundation 2019 Sustainable Communities Conference**

1-4 October 2019, St. Johns, NL

*Earlybird rates until 14 June*

**EcoCity World Summit 2019**

7-11 October, Vancouver

*Save the date*

**Recycling Council of Alberta 2019 Conference: Sea Change**

2-4 October 2019, Jasper

*Early bird registration available until 31 May 2019*

**Environmental Services Association of Alberta (ESAA): RemTech 2019**

16-18 October 2019, Banff

*Save the date*

**2019 APPI Conference: Celebrate Strength**

6-8 October 2019, Fort McMurray

### November

**Canadian Alliance to End Homelessness (CAEH): 2019 National Conference on Ending Homelessness**

4-6 November, 2019, Edmonton

*Save the date*

**ALIDP Conference and Trade Show**

6-8 November, Calgary

If you have an announcement that you would like to see included in our monthly newsletter, please email [Linda](#) with the details.

## NEWS



*Copyright © 2018 Alberta Land-use Knowledge Network, All rights reserved.*  
You are receiving this email because you opted in via our website.

**Our mailing address is:**  
Alberta Land-use Knowledge Network  
1176 Switzer Drive  
Hinton, Alberta T7V 1X6  
Canada