

Alberta Land-use Knowledge Network

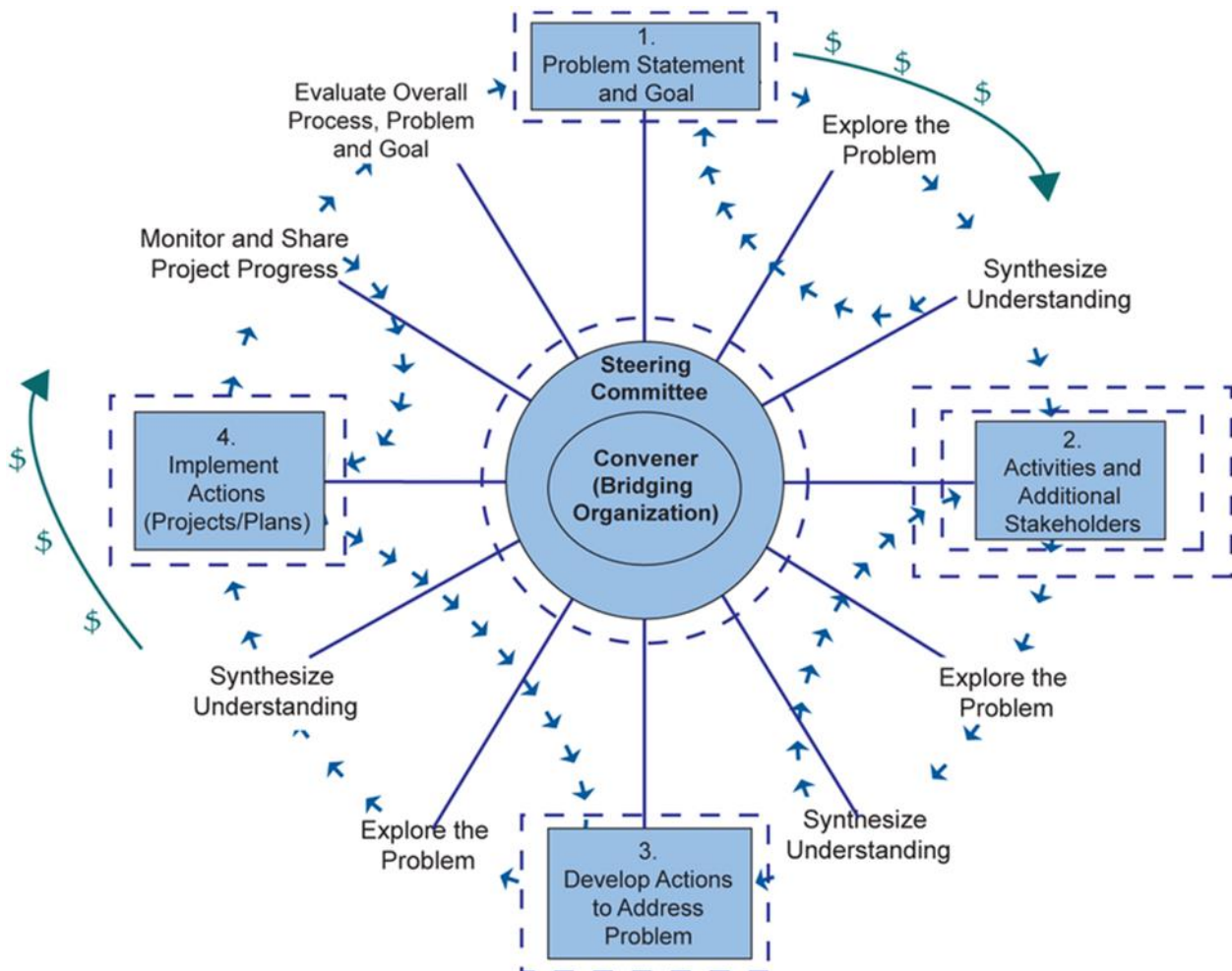


August 2020

Engaging Regional Planning Stakeholders Part II *Engaging to Plan*

The **Land-use Knowledge Network** was launched in 2011 and the **Land Use Planning Hub** in 2018. These two tools continue to grow and support research-based land use decision making throughout the province. If this newsletter was forwarded to you, please consider **subscribing** to our monthly publication.

Review **past issues** of our newsletter



Source: **Mott Lacroix & Megdal (2016)**

Engaging to Plan

Last month's newsletter, **Planning to Engage**, provided information and resources on preparing your consultation process. This month, the newsletter will provide information on how to engage your stakeholders throughout the consultation process.

Planning of land use is an essential step along the road to sustainable resource use. Planning of land use should not be a top-down procedure, but a decision support mechanism, intended to guide the land user or decision-maker through the process of choosing the best land-use option, or range of options.

The Tamarack Institute offers a tool called **the Stakeholder Engagement Wheel** that helps guide a conversation with others to ascertain and implement a collaboration based on a mutual desired level of involvement of all stakeholders. The Tamarack Institute also offers an online course to "help you learn at your own pace as you work to build your community engagement toolkit." Check out the **Foundations of Community Engagement** on their website.

Some Recommended Resources

- Allen, W., Fenemor, A., Kilvington, M., Harmsworth, G., Young, R. G., Deans, N., ... & Smith, R. (2011). **Building collaboration and learning in integrated catchment management: the importance of social process and multiple engagement approaches**. *New Zealand Journal of Marine and Freshwater Research*, 45(3), 525-539.
- Hughes, A. G., Van Wonderen, J. J., Rees, J. G., Seymour, K. J., Manful, D., & Karl, H. (2012). **How to get your model results used: A guide to stakeholder engagement**. *Geological Society, London, Special Publications*, 364(1), 39-48.
- Larson, S., & Williams, L. J. (2009). **Monitoring the success of stakeholder engagement: Literature review**. *People, communities and economies of the Lake Eyre Basin*, 251-298.
- Mott Lacroix, K. E., & Megdal, S. B. (2016). **Explore, synthesize, and repeat: Unraveling complex water management issues through the stakeholder engagement wheel**. *Water*, 8(4), 118.
- O'Brien, L., Marzano, M., & White, R. M. (2013). **'Participatory interdisciplinarity': Towards the integration of disciplinary diversity with stakeholder engagement for new models of knowledge production**. *Science and Public Policy*, 40(1), 51-61.
- Tambunan, T. T. H. (2015). **Identifying stakeholders in land use management process and its critical factors in ASEAN**. *Journal of Investment and Management*, 4(5), 237-249.

New on the Land Use Planning Hub

The **Land Use Planning Hub** is an informal network that supports the implementation of Alberta's regional plans. It is regularly updated with news, resources, and information on regional planning in Alberta. It was launched in 2018 as a complement to the **Land-use Knowledge Network**. Check out the resources and join the conversation.

For more information about the Land Use Planning Hub, contact the website's coordinator, **Jeff Wiehler**.



Land use changes in Alberta (Report)

Annual report on the fragmentation and conversion of agricultural land to non-agricultural uses.



Jobs in land use planning in Alberta

Land use planner job descriptions and how to find opportunities in Alberta.



How Canadian municipalities can use land use planning to adapt to climate change

Updated with the latest FCM report on what municipalities are doing across the country.



Exploring the past and present of Alberta's Public Land Use Zones

Updated with more resources and maps for recreation in PLUZs in Alberta.



An Ongoing Request for Feedback

We would appreciate your input on what we can do to provide the tools and resources on topics that align with your 2020 land use planning priorities. Please complete our **two-question poll** so we can customize our planning resources to fit your needs.

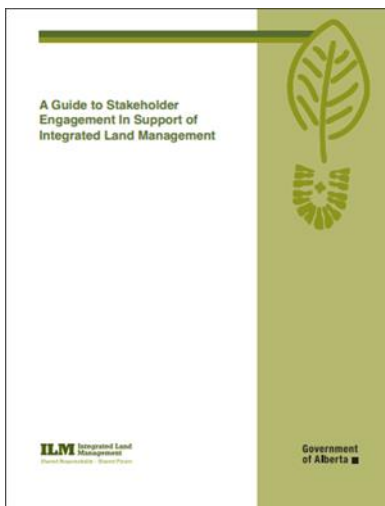
Resources

The **Land-use Knowledge Network** is a repository of a wide variety of resources to support your land use and planning research. Check out these items relating to stakeholder engagement planning...



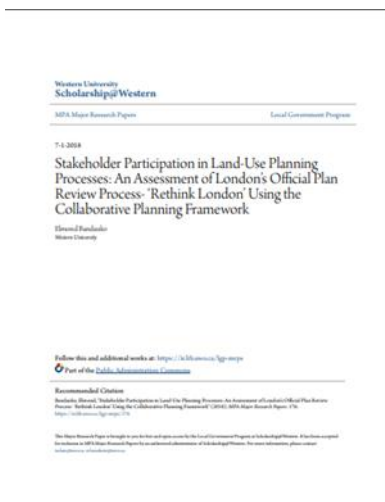
Check out Alberta-based **Jambo**, a cloud-based stakeholder relationship management (SRM) software. Jambo is the fastest and easiest stakeholder engagement and consultation software. It simplifies how organizations manage their stakeholder engagement projects by helping teams collaborate in real-time to track, report and stay on top of all their stakeholder information.

They also offer **useful blogs** on a wide range of stakeholder engagement topics as well as some helpful downloadable content, like a **printable stakeholder map canvas** (great for mapping out your stakeholders before creating an engagement plan. Take a look at their **recording of a webinar** they recently hosted on managing stakeholder issues.



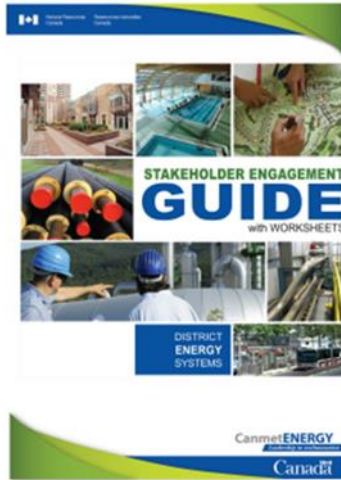
Alberta Environment and Parks (2010). **A guide to stakeholder engagement in support of integrated land management**. Government of Alberta.

This guide is intended to build understanding of the need for stakeholder engagement and to provide tools (templates) for those designing and planning stakeholder engagement.



Bandauko, E. (2018). **Stakeholder participation in land-use planning processes: An assessment of London's official plan review process- 'Rethink London' using the collaborative planning framework**. MPA Major Research Papers. 176. <https://ir.lib.uwo.ca/lgp-mrps/176>

This paper assesses the extent to which Rethink London exemplifies the tenets of collaborative planning. Rethink London was an innovative, community driven approach to planning whose main objective was to collaboratively engage the London community in creating a shared vision for urban development. The assessment was done using the process criteria focusing on issues such as equal opportunities and resources, inclusive representation, self design, independent facilitation, effective process management, voluntary participation and commitment, accountability, high quality information, purpose and incentives and clear ground rules.



CanmetEnergy. (2014). **Stakeholder engagement guide with worksheets**. Ottawa: Natural Resources Canada.



The Stakeholder Engagement Manual: Report and Handbook

Zohar, A., Jackson, C., & Partridge, K. (2005). *From words to action, vol. 1: Practitioners' perspectives on stakeholder engagement*. United Nations Environment Programme

Krick, T., Forstater, M. Monaghan, P., & Sillanpää, M. (2005). *The stakeholder engagement manual, vol. 2: The practitioner's handbook on stakeholder engagement*. United Nations Environment Programme

Events

If you have an event, announcement, or new report that you would like to see included in our monthly newsletter, please email [Linda](#) with the details.

Many of the events noted here have been postponed due to the Covid19 pandemic. We will update our events pages as soon as we receive new information on each event. Stay safe everyone.

August

Riparian Management Course

4–18 (Tue & Thu) August 2020, Zoom

Turf, Trust, and Virtual Collaboration

13 August, Zoom

September

No changes announced yet

Alberta Professional Planners Institute (APPI) Annual Conference: Beyond Success: Growth by Failure

20–22 September, 2020, Lethbridge

2020 AUMA Convention - Together We Can!

23–25 September, online

Save the Date, no changes announced yet
Western Canada Water Conference and Exhibition 2020
22–25 September, Regina, Saskatchewan

October

Save the Date, no changes announced yet
FCM's Sustainable Communities Conference
20-22 October, 2020, St. John's, NL

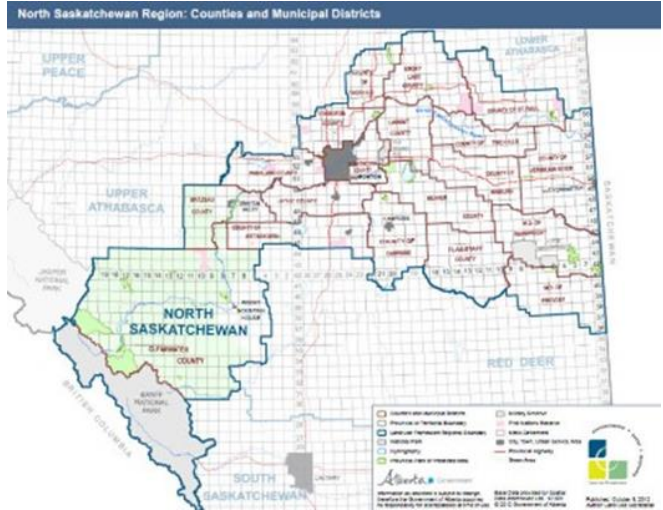
November

Save the Date, no changes announced yet
RMA 2020 Fall Convention & Tradeshow
2-5 November, 2020, Edmonton

North Saskatchewan Regional Plan (NSRP)

The North Saskatchewan Region contains a diverse landscape encompassing Rocky Mountain, rolling foothill and prairie parkland ecosystems. The North Saskatchewan Region includes headwaters forests that provide clean water to downstream communities, mountains foothills, and parkland that support a diversity of habitats that provide homes for species at risk and serves as a major source of recreation and tourism.

The North Saskatchewan Regional Advisory Council



Copyright © 2018 Alberta Land-use Knowledge Network, All rights reserved.
You are receiving this email because you opted in via our website.

Our mailing address is:
Alberta Land-use Knowledge Network
1176 Switzer Drive
Hinton, Alberta T7V 1X6
Canada