



October 2018

Integrated Land Management

Welcome to the *Alberta Land-use Knowledge Network's* new monthly newsletter in which we share information and resources about land use planning in Alberta.

If this newsletter was forwarded to you, please consider **subscribing** to our monthly publication.

Review **past issues** of our newsletter



ILM Integrated Land
Management
Shared Responsibility - Shared Future

Source: Alberta Environment and Parks

Land Use Planning Hub

The **Land Use Planning Hub** is an informal network that supports the implementation of Alberta's regional plans.

Currently on the Land Use Planning Hub



The boom and bust of regional planning: Detailed history of land use planning in Alberta

Regional planning is founded on dreaming of what can be achieved in the future and then setting out the steps to get there. It is an optimistic vision – which is typically created in optimistic times. And during periods of economic difficulty, political and social priorities focus on meeting the needs of the day instead of the tomorrow.

Economic swings between prosperity and challenges adjusted the emphasis on comprehensive long-term planning. Here is a detailed account of the policies and approaches for land use planning in Alberta.

New report: A scientific assessment of the Upper North Saskatchewan and Red Deer River basins

This comprehensive report published in September 2018 reviews the primary land use stressors along the Eastern Slopes of the Rocky Mountains in west-central Alberta.

For more information about the Land Use Planning Hub, contact the website's coordinator, [Jeff Wiehler](#)

North Saskatchewan Regional Plan (NSRP)

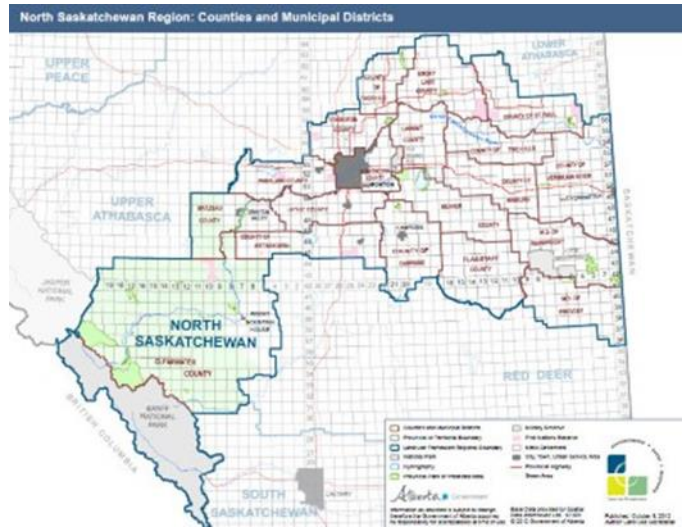
The North Saskatchewan Region contains a diverse landscape encompassing Rocky Mountain, rolling foothill and prairie parkland ecosystems. The North Saskatchewan Region includes headwaters forests that provide clean water to downstream communities, mountains foothills, and parkland that support a diversity of habitats that provide homes for species at risk and serves as a major source of recreation and tourism.

The North Saskatchewan Regional Advisory Council

Recommendations Report Survey is now closed. Please stay tuned for the next steps.

Check out our resource list related to the [North Saskatchewan Regional Planning](#) process.

[Recommendations Document from the North Saskatchewan Regional Advisory Council](#)



Integrated Land Management

Land Use Topics

Integrated land management (ILM) is an approach to informed land management planning, decision-making, actions, and evaluation that applies to the life-cycle of activities on the landscape.

ILM is aimed at managing the footprint of human uses on public land and associated natural resources. Managing the footprint means managing the impact of human use of land and resources on landscape values. Values can be:

- Economic - industrial commercial
- Social - recreational, aesthetic
- Environmental - water, wildlife

ILM is not a plan or a process. ILM is a way of doing business and a way of thinking, by sharing the land and working together land users can reduce their impact on the land

The Land-Use Framework is a strategic, high-level plan to make land-use decisions in Alberta. The regional plans will identify what land use goes where. ILM is the on-the-ground way to influence land-user behaviour, improve stewardship, and reduce the relative footprint.

The vision of the Alberta Land-use Framework is that Albertans work together to respect and care for the land as the foundation of our economic, environmental, and social well-being.

By promoting the efficient use of land and aiming to reduce the footprint of human activities, ILM will play an integral role in achieving that vision.

Integrated Land Management (ILM) is the strategic planned approach to managing and reducing the human-caused footprint on public land.

The goals of ILM are:

- To reduce land-use disturbances relative to what would occur in the absence of integrated efforts
- To foster a stewardship ethic in all land users

All land users are responsible for integrated land management. By working together, we can reduce our impact on the land by:

- Sharing the land
- Planning the use of our land together
- Building understanding through shared knowledge
- Practicing stewardship

Source: **Alberta Environment and Parks**

Describing the integrated land management approach (2010)

GoA Fact Sheet: Integrated Land Management (2010)

To help promote the efficient use of land, the Government of Alberta has completed a review of tools and best practices by municipalities in Alberta and other jurisdictions. The results of this review have been compiled into the **Efficient Use of Land: Implementation Tools Compendium** (2014) to serve as a resource for land-use planners, land users and decision-makers involved in land management planning and decision-making on public and private land.

Spotlighted Organizations

Alberta's Industrial Heartland is guided by a non profit association of municipalities dedicated to sustainable eco-industrial development. **Alberta's Industrial Heartland Association (AIHA)** was created in 1998 by the municipalities who each had land within the geographic area of Alberta's Industrial Heartland.



A leading principal of AIHA is promoting responsible development within the region. This includes ensuring the region is ready for development in its infrastructure, services, and land use zoning principles. AIHA recognizes that activities in the area can have a major impact on neighboring communities and affect their service delivery as well. Together, the municipalities take a proactive and cooperative approach to planning and industrial development.

Municipal Partners

- **City of Fort Saskatchewan**
- **Lamont County**
- **Strathcona County**
- **Sturgeon County**
- **City of Edmonton**

Associate Members

- **Town of Bruderheim**
- **Town of Gibbons**
- **Town of Redwater**



Unprecedented growth in Alberta has created a vibrant economy, but it has also placed a tremendous strain on the forest, grassland, and rivers which help to sustain that growth.

The **Alberta Tomorrow** simulator is an educational tool that helps you to understand the process of sustainable planning to balance land-uses such as agriculture, oil and gas and forestry with ecological integrity. By looking at past and present landscape imagery, you will be able to see changes that have taken place in the past. You can also collect, geotag and save water sampling data, images, video and other observations.

The **Landuse Knowledge Network** is a repository of a wide variety of resources to support your land use and planning research. Take a look at these items...

Resources on the LuKN

Consultation Opportunities and Tools

Public Participation Policies and Public Notification: A Guide for Municipalities (2018)

This Guidance Document is an educational tool that contains general information intended to assist municipalities in developing a Public Participation Policy and Public Notification Bylaw.

New MGA Tool: Public Engagement Guide (2018)

RMA and AUMA have partnered with Alberta Municipal Affairs to develop a guide for engaging the public in response to the new requirements under the Municipal Government Act (MGA). This new Public Engagement Guide offers a step-by-step look at how to fulfill the requirements of your Public Engagement Policy and make public engagement work for you. A Public Engagement Workbook that provides easy-to-use templates to help develop an approach, plan, and implement public engagement is also included.

EVENTS

If you have an event that you would like to see included in our monthly newsletter, please email **Linda** with the details.

October

Registration closes October 8

Canada Green Building Council: Alberta Sustainable Building Symposium

October 11-12 Calgary

Tickets available until October 7 only

Alberta Community & Co-operative Association: **2018 Gathering of Alberta Co-operatives**

October 17-18 Stony Plain

Save the Date

Remote Sensing Workshop

October 24-25 Edmonton

Environmental Law Centre: Green Regs and Ham: Science, Decision Making & the Law, The Impact Assessment Cat in the Science Hat

October 25 Calgary

Registration closes October 10

ARDN: **Canadian Rural and Remote Housing and Homelessness Symposium 2018**

October 24-26 Canmore

November

Early bird pricing until September 4

Evergreen and ULI Toronto: Future Cities Canada Summit

Realizing the Potential of Cities
November 7-9 Toronto

Early bird Registration ends October 19

RMA Fall 2018 Convention
November 19-22 Edmonton

RMA Water and Agriculture Conference
November 22 Crossfield

Registration is now open

Canadian Storm Water Institute Conference
November 26-27 Calgary

Part of the Canadian Storm Water Institute Conference
ALIDP Ready, Aim, Fire: Strategies to Target and Achieve Resilience (half day workshop)
November 27 Calgary

If you have an announcement that you would like to see included in our monthly newsletter, please email [Linda](#) with the details.

NEWS

Grande Cache votes to dissolve town and become a hamlet in MD Greenview No. 16.
Edmonton Journal, 26 September 2018

Notley slams Bill C-69 at International Pipeline Conference
CBC News, 25 September 2018

Ottawa gives pipeline regulator 22 weeks to review Trans Mountain expansion project
CBC News, Kathleen Harris, 21 September 2018

For the love of the land: Alberta ranch donates conservation easement for conservation efforts
Global News, Kaylen Small, 19 September 2018

County of Grande Prairie launches rural homelessness estimation project
Everything GP, Sheena Roszell, 21 August 2018

Study launched to examine rural homelessness
Herald-Tribune, Daniel Katz, 21 August 2018



*Copyright © 2018 Alberta Land-use Knowledge Network, All rights reserved.
You are receiving this email because you opted in via our website.*

Our mailing address is:
Alberta Land-use Knowledge Network
1176 Switzer Drive
Hinton, Alberta T7V 1X6
Canada