



December 2018

## Conservation

Welcome to the *Alberta Land-use Knowledge Network's* new monthly newsletter in which we share information and resources about land use planning in Alberta.

If this newsletter was forwarded to you, please consider **subscribing** to our monthly publication.

Review **past issues** of our newsletter



Borrowed from: Essex Region Conservation Bike Tour and Lakefront Festival

### Land Use Planning Hub

The **Land Use Planning Hub** is an informal network that supports the implementation of Alberta's regional plans.

## Currently on the Land Use Planning Hub

### WPAC Review of the South Saskatchewan River Basin Approved Water Management Plan

The South Saskatchewan River Basin Water Management Plan was implemented in 2006 for the Bow, Oldman, and South Saskatchewan sub-basins. To mark the 10<sup>th</sup> anniversary of the Plan, the Watershed Planning and Advisory Councils (WPACs) underwent a comprehensive review of the Plan.



### Tracking natural assets in municipalities

Even though natural assets can provide similar services as infrastructure made by municipalities, natural assets are not often considered equal to their human-made counterparts. The **Municipal Natural Assets Initiative (MNAI)** is striving to change how natural assets are managed.



### How Canadian municipalities can use land use planning to adapt to climate change

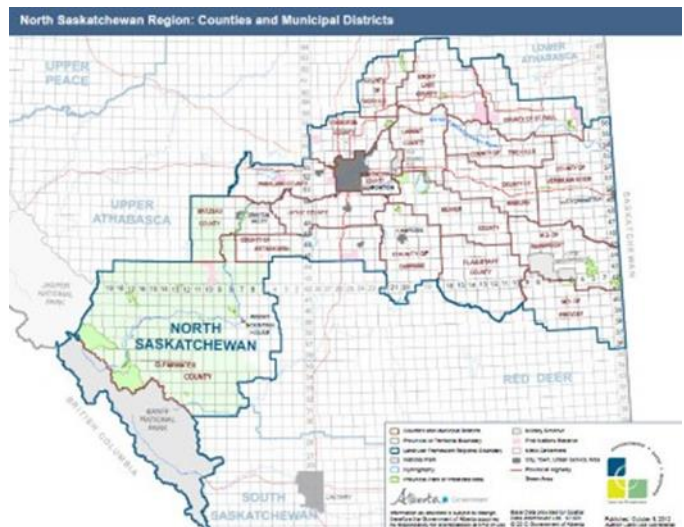
Approaches to avoid, adapt or mitigate to climate change are being discussed around the world. By considering the high-level purpose, use and functioning of entire regions, land use planning is a tool that can help local communities reduce their contributions to and impacts from climate change.

For more information about the Land Use Planning Hub, contact the website's coordinator, [Jeff Wiehler](#)



The North Saskatchewan Region contains a diverse landscape encompassing Rocky Mountain, rolling foothill and prairie parkland ecosystems. The North Saskatchewan Region includes headwaters forests that provide clean water to downstream communities, mountains foothills, and parkland that support a diversity of habitats that provide homes for species at risk and serves as a major source of recreation and tourism.

The North Saskatchewan Regional Advisory Council



Read Jeff Wiehler's post entitled [Preparing for the next regional plans](#)

Alberta's current approach to land use planning dates back to 2007, when the *Land-use Framework* introduced a vision of economic and environmental prosperity for the province. fRI Research has contributed to this vision by providing resources, research and information for planners, planning practitioners and land use decision makers.

The [Land-use Knowledge Network](#) was launched in 2011 and the [Land Use Planning Hub](#) in 2018. These two tools continue to grow and support research-based land use decision making throughout the province.

Check out our resource list related to the [North Saskatchewan Regional Planning](#) process.

[Recommendations Document from the North Saskatchewan Regional Advisory Council](#)

Conservation is a broad topic and incorporates ideals and activities by governments, non-government organizations, communities, industry, and individuals to protect our resources, land, and environment. Alberta is home to an abundance of organizations and initiatives to protect our natural resources, our environment, and the biodiversity of flora and fauna in our province. This newsletter is an introduction to a sampling of resources and organizations related to this vital land use planning topic.

### Big Horn Country Consultation



Of particular interest, relating to conservation, the Government of Alberta is beginning **consultations on a proposal for Bighorn Country** that would conserve natural landscapes while boosting economic development, tourism, and recreation.

#### Have your say

To ensure the right balance of Indigenous, economic, environmental, and social values and goals, all interested parties can provide input on the future of the Bighorn Country through an **online survey** available from Nov. 23, 2018 to Jan. 31, 2019.

Please review the **site profiles**, **boundary maps**, **glossary** and **Bighorn Country overview** for details and information on the proposal before you respond.

## Spotlighted Organizations

**Alberta Conservation Association** conserves, protects, and enhances fish and wildlife populations and their habitats for Albertans to enjoy, value and use.

“Conservation is about keeping our connections to the past, getting outdoors now, and most of all—shaping our quality of life as we take on tomorrow.”



**Yellowhead to Yukon Conservation Initiative** (Y2Y) is a joint Canada-U.S. not-for-profit organization that connects and protects habitat from Yellowstone to Yukon so people and nature can thrive. They are the only organization dedicated to securing the long-term ecological health of this entire region.

LuKN would like to congratulate The **Canadian Parks and Wilderness Society (CPAWS)** on their Canadian Museum of Nature / Musée canadien de la nature **award recognizing their work in promoting effective nature conservation and management decisions and policy.**





The **Land-use Knowledge Network** is a repository of a wide variety of resources to support your land use and planning research. Take a look at these items...



## Resources on the LuKN

**Alberta Environment and Parks (2014). *Efficient Use of Land: Implementation Tools Compendium*.** Created in 2014 by the Government of Alberta, this compendium outlines tools and practices to implement strategies for the efficient use of land. The strategies are targeted to planners, landowners and developers, public land managers, and public service providers – anyone involved in land use decision making. Some of the strategies have been tested and applied within Alberta and other strategies are adapted from planning practices around the world.

### **Land Use Planning Topics: Water for Life**

How we use water is fundamental to all life. How successfully we conserve it, maintain its quality, and recognize and preserve the habitats that depend on it cannot be treated as isolated elements. We cannot do one and not others. The complex and interrelated nature of managing water is at the core of the Water for Life strategy.

### **New tools to map, understand, and track landscape changes and animal health for effective management and conservation of species at risk: progress report**

### **Conservation Easement Registration Regulation: Alberta Regulation 129/2010**

In the Alberta Land Stewardship Act, there is a provision for Conservation Easement Registration. These regulations ensure that the agreement reached between the landowner and the organization meets the requirements of the Act.

### **Social Science Program QuickNote #2: Human Dimensions of Biodiversity Conservation**

Note on a study to investigate public perceptions, socially acceptable and ecologically feasible management options for grizzly bear conservation.

### **National Conservation Plan**

The 2014 National Conservation Plan contains efforts to encourage stewardship actions on private lands and working landscapes, manage protected areas, produce and disseminate the knowledge needed for informed decision-making, and connect people to nature so that they are motivated to participate in conservation activities.

***Footprints: The Evolution of Land Conservation and Reclamation in Alberta*** by Robert Bott, Graham Chandler, and Peter McKenzie-Brown is an illustrated and extensively annotated 23MB e-book available for free download

### **Riparian Land Conservation and Management Report and Recommendations** - Alberta Water Council

In November 2013 the Alberta Water Council released this report regarding management of riparian areas in Alberta. The report includes 13 recommendations for the Government of Alberta to consider when making decisions in this area.

**Waste Facts** is Alberta Environment's companion document to Too Good to Waste: Making Conservation a Priority, this document contains facts and figures about waste management in Alberta.

**Too Good to Waste: Making Conservation a Priority** outlines Alberta Environment's approach to managing the province's waste, with a focus on conservation. Objectives, strategies, and long-term goals are discussed.

**Land Use Planning Topics: Conservation** (scholarly references)

**Land Use Planning Topics: Conservation-Wetlands** (scholarly references)

**Land Use Planning Topics: Conservation-Urban** (scholarly references)

## EVENTS

If you have an event that you would like to see included in our monthly newsletter, please email [Linda](#) with the details.

### January

*Deadline*

**Have your say on the Big Horn Country Survey**

31 January 2019, Online

### April

**Environmental Services Association of Alberta (ESAA):**

**EnvroTech 2019**

23-25 April 2019, Calgary

### February

**Shelterbelt Workshop in Northern Sunrise County**

6 February 2019, St. Isadore

**Northern Sunrise County Bumblebee House Building Workshop**

7 February, St. Isadore

If you have an announcement that you would like to see included in our monthly newsletter, please email [Linda](#) with the details.

## NEWS

#### **Access to tidewater focus of fiscal update**

As Alberta's deficit continues to drop; new economic headwinds pose a potential challenge for the province's recovering economy if left unchecked.

GoA, 30 November 2018

#### **One-stop shop for Alberta utility consumers**

Albertans who have concerns about their water utility provider can access free mediation services through the Utilities Consumer Advocate beginning Dec. 1.

GoA, 30 November 2018

#### **New era for provincial, cities partnership**

The Alberta government is introducing a new funding approach for the province's two biggest cities that would help Calgary and Edmonton attract investment, support growth, and create jobs.

GoA, 29 November 2018

#### **Multimillion-dollar Canmore debris dam set to break ground in 2019**

Zach Laing, Calgary Herald, 24 November 2018

#### **2019 AUPRF Call for Funding Applications**

The Alberta Upstream Petroleum Research Fund (AUPRF) is seeking applications for the 2019 funding cycle for projects that are of focused interest to industry. The priority focus areas include: Ecological, Remediation and Reclamation and Well Abandonment knowledge gaps. Please note the Air and Water technical knowledge gaps will be issued in January.

#### **Putting power in the hands of communities**

The province is making it easier for communities to develop their own renewable energy projects.

GoA, 22 November 2018

#### **Oil upgrading proposals worth billions**

Premier Rachel Notley's made-in-Alberta energy upgrading strategy is a step closer to creating thousands of jobs and attracting billions of dollars in private sector investment while keeping more value in the province.

GoA, 22 November 2018

### **New Fish Creek trail breaks down barriers**

A new trail at Fish Creek Provincial Park will be named for an Alberta Parks volunteer who fought to make provincial parks more accessible.

GoA, 16 November 2018

### **More options with Calgary transit expansion**

The Alberta government is investing in new MAX transit lines throughout Calgary to offer faster, more efficient ways for Calgarians to get around.

### **Statement from the Alberta Energy Regulator**

AER, 1 November 2018

### **Federal government says help on the way for remote, Indigenous communities amid Greyhound shutdown**

Global News, Terry Pedwell, 31 October 2018



*Copyright © 2018 Alberta Land-use Knowledge Network, All rights reserved.  
You are receiving this email because you opted in via our website.*

**Our mailing address is:**  
Alberta Land-use Knowledge Network  
1176 Switzer Drive  
Hinton, Alberta T7V 1X6  
Canada