



December 2019

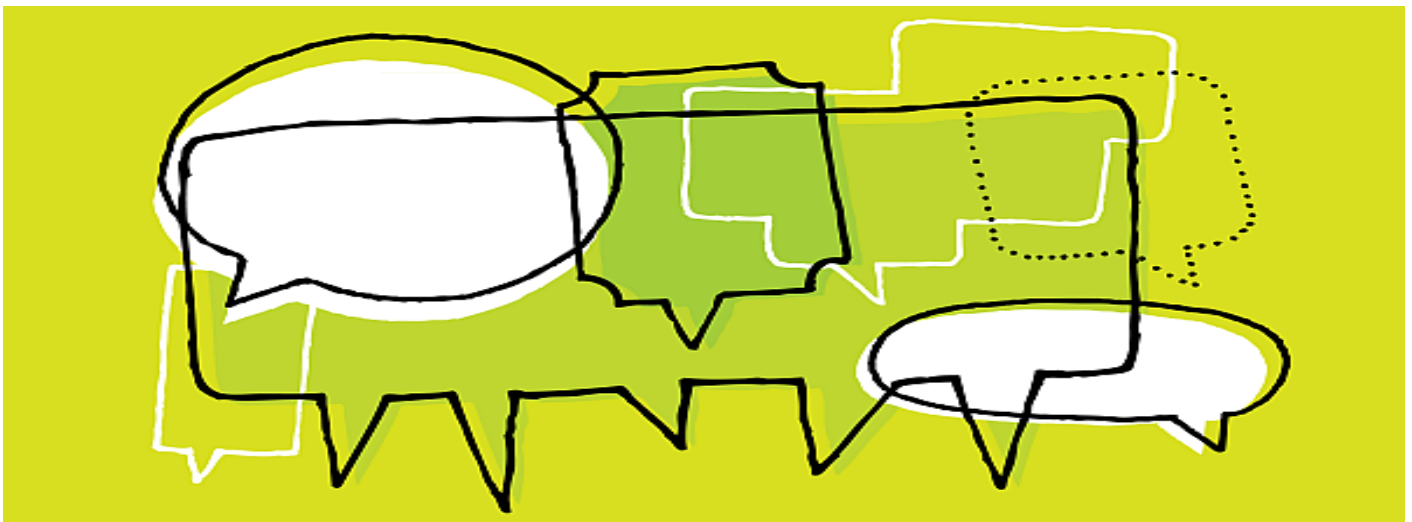
Indigenous Consultation

Welcome to the *Alberta Land-use Knowledge Network's* new monthly newsletter in which we share information and resources about land use planning in Alberta.

The **Land-use Knowledge Network** was launched in 2011 and the **Land Use Planning Hub** in 2018. These two tools continue to grow and support research-based land use decision making throughout the province

If this newsletter was forwarded to you, please consider **subscribing** to our monthly publication.

Review **past issues** of our newsletter



Source: **Government of Ontario**

Indigenous Consultation

Land Use Topics

Alberta's management and development of provincial Crown lands and natural resources is subject to its legal and constitutional duty to consult First Nations and, where appropriate, accommodate their interests when Crown decisions may adversely affect their continued exercise of constitutionally protected Treaty rights and traditional uses. Traditional First Nation uses of land include burial grounds, gathering sites, and historical or ceremonial locations and do not refer to proprietary interests in the land.

Alberta also consults with Metis Settlements on potential adverse impacts of Crown decisions on Metis Settlement members' harvesting and traditional use activities.

Consultation is a process intended to understand and consider the potential adverse impacts of anticipated Crown decision on First Nations and Metis settlements, with a view to substantially address them.

Consultation with Alberta Indigenous and Metis Communities: Policy and Guidelines

Consultation Submission Checklist (Alberta)

Effective January 1, 2019 proponents are required to submit a Consultation Submission Checklist (PDF, 1.3 MB) for Consultation Adequacy Submissions for all Level 1 and 2 consultation files under the Public Lands Act.

Aboriginal and Treaty Rights Information System (Canada)

The Aboriginal and Treaty Rights Information System (ATRIS) is a web-based, geographic information system that locates Indigenous communities and displays information relating to their potential or established Aboriginal or treaty rights.



The **Land Use Planning Hub** is an informal network that supports the implementation of Alberta's regional plans.

Currently on the Land Use Planning Hub



State of regional planning in Canada

A glance into the land use planning approaches of other Canadian provinces.



Review of habitat law in Alberta

A new resource from the Alberta Environmental Law Centre outlines the relevant policies and tools that protect habitat in the province. Included in this review are the laws and framework for land use planning in Alberta.



7 resources for Indigenous consultation

Here are seven resources on Indigenous consultation in Alberta from Indigenous groups, government, researchers and non-profits.



Water resilience for cities

This framework and toolkit was developed for application around the world by providing a process that can assess a water system and improve coordination of water governance.

For more information about the Land Use Planning Hub, contact the website's coordinator, [Jeff Wiehler](#)

Spotlighted Organizations

Aboriginal Consultation Office

Sign up for news updates from the Government of Alberta's Aboriginal Consultation Office (ACO), using the form on their web page.



Crown-Indigenous Relations and Northern Affairs Canada (CIRNAC) continues to renew the nation-to-nation, Inuit-Crown, government-to-government relationship between Canada and First Nations, Inuit and Métis; modernize Government of Canada structures to enable Indigenous peoples to build capacity and support their vision of self-determination; and lead the Government of Canada's work in the North.

The **Land-use Knowledge Network** is a repository of a wide variety of resources to support your land use and planning research. Take a look at these items...

Resources on the LuKN

Consultation Guides and Resources

Overview assessment of historic and current land-use activities in selected Foothills Model Forest watersheds

Proceedings of a workshop to develop a strategic plan for a Watershed Assessment Model (WAM)

EVENTS

February

Applied Land Use Planning Symposium 2020

6 February, 2020, Edmonton

If you have an event that you would like to see included in our monthly newsletter, please email **Linda** with the details.

If you have an announcement that you would like to see included in our monthly newsletter, please email Linda with the details.

NEWS

Alberta Reclamation and Restoration Economy Survey

We are conducting research into Alberta's reclamation and restoration economy on behalf of the **Canadian Forest Service, Natural Resources Canada**. This research is an important step towards quantifying Alberta's reclamation and restoration industry. The value for you is in quantifying the importance of your industry and its contribution to the Alberta economy. The study will also help demonstrate the critical role of reclamation and restoration in ensuring that Alberta can achieve sustainable resource development and sustainable cities. Your response will make a difference.

This survey should take about 15 minutes of your time. Instructions are found on the introductory page. Responses will be kept anonymous and results aggregated to protect the privacy of people, companies, and organizations.

A report summarizing the results of the survey plus the background literature review will be available in 2020. It will be available through Chris Powter.

To save time, please have the following information available before beginning the survey:

- number of staff involved in R&R activities;
- number of full-time equivalents that equate to the staff numbers; and,
- approximate value for R&R revenue and expenses for the last fiscal year

The survey is available online until **December 20**. If you would prefer to get the survey in an alternate format (Word or pdf), or provide your responses by phone, please contact Chris.

Survey Contacts

Enviro Q&A Services: Chris Powter at enviroqas@shaw.ca for information and requests

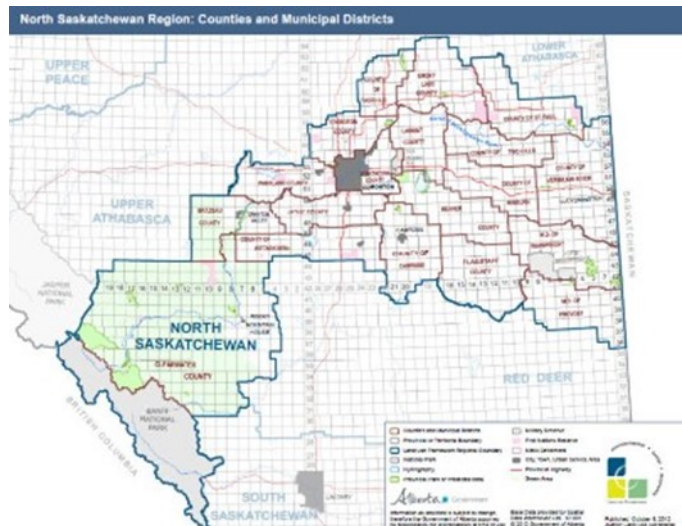
Regulatory and Strategic Affairs Center: Richard Dixon – rjdixon@ualberta.ca

Canadian Forest Service, NRCan: Nicolas Mansuy (825) 510-1238, nicolas.mansuy@canada.ca.

North Saskatchewan Regional Plan (NSRP)

The North Saskatchewan Region contains a diverse landscape encompassing Rocky Mountain, rolling foothill and prairie parkland ecosystems. The North Saskatchewan Region includes headwaters forests that provide clean water to downstream communities, mountains foothills, and parkland that support a diversity of habitats that provide homes for species at risk and serves as a major source of recreation and tourism.

The North Saskatchewan Regional Advisory Council





*Copyright © 2018 Alberta Land-use Knowledge Network, All rights reserved.
You are receiving this email because you opted in via our website.*

Our mailing address is:
Alberta Land-use Knowledge Network
1176 Switzer Drive
Hinton, Alberta T7V 1X6
Canada