

Alberta Land-use Knowledge Network



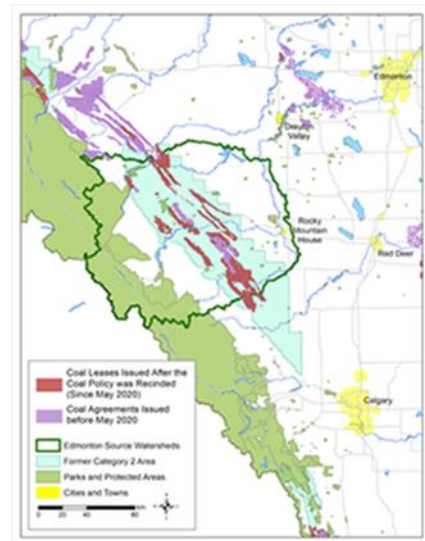
Access [Archived LuKN Newsletters](#)

February 2021

Land-use Planning and Coal Exploration in Alberta

The **Alberta Energy Regulator** is responsible for processing all coal mining applications and their timeline for completing this takes anywhere from 20 to 375 business days.

A number of non-profits in Alberta are concerned that this process has been opened up too much due to the government's rescinding of the Coal Development Policy (1976). The Government of Alberta argues that the Regional Plans provide more stringent guidelines than the old Coal Development Policy, however, only two of the seven regions have active regional policies in place and, according to CPAWS, **"the existing South Saskatchewan Regional Plan (SSRP) does not include the zoning of highly ecologically sensitive areas or where mines can and cannot be developed equivalent to the Coal Policy."**



Source **CPAWS**

Alberta Policies

Coal Development Policy for Alberta (1976) Rescinded June 2020

Coal Conservation Act (2013 and Regulation (2020))

Land Use Regional Plans: Alberta Environment and Parks (AEP)

Only two of the seven regional plans have been completed in Alberta and one was in the consultation process in 2017, but has since stalled.

- **Lower Athabasca Region** approved August 22, 2012
- **South Saskatchewan Region** approved January 20, 2017
- **North Saskatchewan Region** consultations stalled in 2017 and have not yet restarted.

Environmental Protection and Enhancement Act/Regulation (Alberta 2020)

Environmental Assessment (Mandatory and Exempted Activities) Regulation

Water Act (Alberta 2017)

Environmental Assessment Regulation (Alberta 2013)

Inside this Issue

- Planning for Coal Exploration in Alberta
- New on the Land Use Planning Hub
- LuKN Resources
- Events Calendar

New on the Land Use Planning Hub

The **Land Use Planning Hub** is an informal network that supports the implementation of Alberta's regional plans. It is regularly updated with news, resources, and information on regional planning in Alberta. It was launched in 2018 as a complement to the **Land-use Knowledge Network**. Check out the resources and join the conversation.

For more information about the Land Use Planning Hub, contact the website's coordinator, **Jeff Wiehler**.



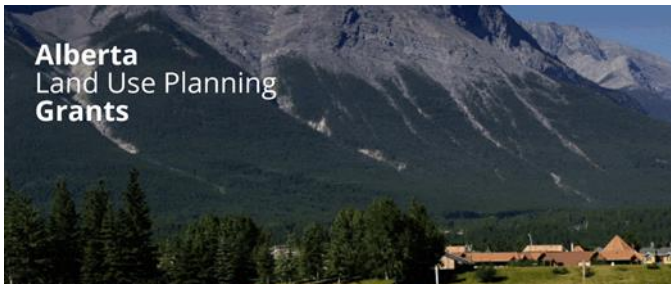
Land use and coal in Alberta (Roundup)

Resources and information related to land use planning and coal development in Alberta.



Flood planning in Alberta

Flood resilience aims to mitigate impacts of floods by making communities more prepared.



Alberta Land Use Planning Grants (Updated 2021)

Find grants and funding related to land use planning in Alberta.

Resources

A Cumulative Watershed Effects Assessment Template for the Eastern Slopes: The Geomorphic and Riparian Components with a Case Study of Todd Creek Watershed

This three-part document provides a template to guide cumulative watershed effects assessments (CWEA) within Alberta's Eastern Slopes.

Watershed assessment procedure to address cumulative effects in the eastern slopes of Alberta

Natural patterns of the Eastern Slopes of Alberta

Alberta Culture and Tourism: Board Development Program: **Writing a Grant Proposal (2010)**

Notes and News from Our Community

Oldman Watershed Council: Navigating Our Future (blog series)

Part 1: Navigating Our Future: **What's in Store for the Mountains and Foothills**

IISD **How Can Nature Play a Leading Role in Adapting to Climate Change?** Five takeaways from Canada's action on nature-based solutions for climate adaptation roundtable dialogue (by Anika Terton, 16 December 2020)

Events

If you have an event, announcement, or new report that you would like to see included in our monthly newsletter, please email **Linda** with the details.

February

Government of Alberta: Community Development Unit: Grant Writing 101

11 February 2021, Online

Athabasca Watershed Council Board of Directors Meeting

11 February 2021, Zoom

March

Government of Alberta: Community Development Unit: Grant Writing 101

4 March 2021, Online

Rural Municipalities of Alberta 2021 Spring Convention

16-17 March 2021, Online



Our mailing address is:

Alberta Land-use Knowledge Network
1176 Switzer Drive
Hinton, Alberta T7V 1X6
Canada