

Rural Development

If this newsletter was forwarded to you, please consider **subscribing** to our monthly publication.

[illegible]

Source: **Infrastructure Canada**

New on the Land Use Planning Hub

The **Land Use Planning Hub** is an informal network that supports the implementation of Alberta's regional plans. It is regularly updated with news, resources, and information on regional planning in Alberta. It was launched in 2018 as a complement to the **Land-use Knowledge Network**. Check out the resources and join the conversation.

For more information about the Land Use Planning Hub, contact the website's coordinator, **Jeff Wiehler**.

Land Use Planning Training & Courses



Training and Courses on Land Use Planning

Here are the online and in-person workshops, courses, and academic programs related to land use planning in Alberta. These training opportunities are for experienced or emerging professionals in municipal planning, development, conservation, and land use planning.

Integrated land management and the Land-use Framework



A primer on integrated land management in Alberta

Regional plans set out the goals for a region, and they require all planning documents for that region to abide by those goals. Integrated resource plans apply the regional plans in defined regions or landscapes.

Alberta Budget 2020 & Regional Planning



What the 2020 budget says about regional planning

Regional planning is mentioned in the mandates for Alberta Environment and Parks (which includes the Land Use Secretariat) and Municipal Affairs. Here is what the 2020-2023 business plans say about regional planning in Alberta.



An Ongoing Request for Feedback

We would appreciate your input on what we can do to provide the tools and resources on topics that align with your 2020 land use planning priorities. Please complete our **two-question poll** so we can customize our planning resources to fit your needs.

Resources

The **Land-use Knowledge Network** is a repository of a wide variety of resources to support your land use and planning research. Check out these items...



Government of Alberta: Land use Regional Planning

Through the Land-use Framework, the Alberta government is addressing cumulative impacts on the environment.

Services and Information

Environment and Land Use Planning

Regional plans identify and set resource and environmental management outcomes for air, land, water, and biodiversity.

Integrated Land Management

Integrated Land Management (ILM) is the strategic planned approach to managing and reducing the human-caused footprint on public land.

Integrated Resource Plans

Integrated Resource Plans are place-based plans that identify objectives for long-term management of specific landscapes.



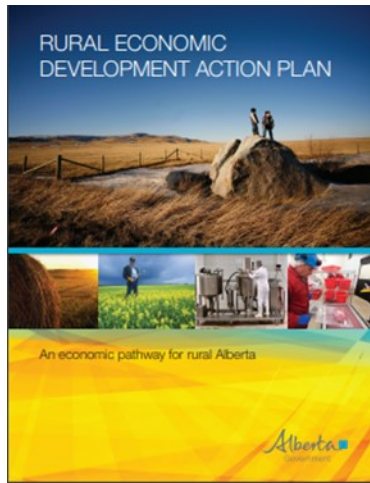
Rural Challenges, National Opportunity: Shaping the Future of Rural Canada

Rural communities play a crucial role in nation building. Throughout this report, we profile rural communities that are showing leadership in shaping Canada's future. These communities have remained resilient, adapting to familiar challenges facing their communities—including aging populations, the closure of a major local employer, or limited access to the communications infrastructure that we all need to remain competitive

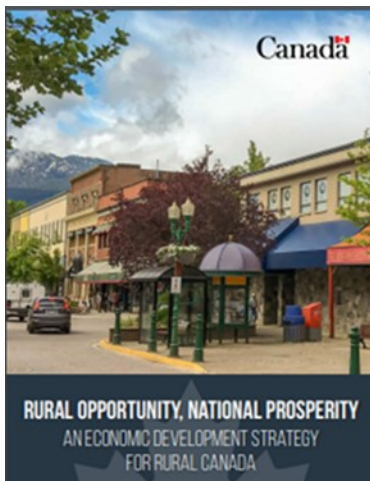


Canadians living in rural communities have unique needs. We hear from the people in these communities who need access to better infrastructure, including improved roads and bridges, cleaner drinking water, affordable housing, and faster, more reliable Internet service, all of which can make a big difference in the quality of life of rural Canadians.

The Government of Canada is making significant investments through the **Investing in Canada plan** to renew public infrastructure, which can attract new talent and investment, create new jobs and business opportunities to ensure that rural Canada continues to thrive.



The **Rural Economic Development Action Plan – an economic pathway for rural Alberta** outlines the steps that governments, industries, businesses, and communities can take to increase economic development capacity, improve on the current suite of initiatives, and orchestrate new opportunities to enable rural Alberta's continued success.



Rural Opportunities, National Prosperity: An Economic Development Strategy for Rural Canada

This strategy is based on extensive consultations with the people living and working in rural communities across Canada – like forestry workers, entrepreneurs, and farmers – as well as community leaders, associations, businesses, academics, municipalities, Indigenous groups, and provincial and territorial governments. It directly responds to the priorities, concerns, and ideas we heard from rural Canada, and puts people, places, and partnerships at the centre of rural economic development



The **Alberta Rural Development Network (ARDN)** is a not-for-profit organization that uses the combined expertise of nine Albertan post-secondary institutions to support rural development in Alberta and help rural communities grow through research and learning.

Alberta Rural Development Network Introduction (video)



The **Rural Development Institute (RDI)** functions as a not-for-profit research and development organization designed to promote, facilitate, coordinate, initiate, and conduct multi-disciplinary academic and applied research on rural issues.



Rural Municipalities of Alberta (RMA) is an independent association comprising Alberta's 69 counties and municipal districts.



The **Federation of Canadian Municipalities (FCM)** has been the national voice of municipal government since 1901. Our members include more than 2,000 municipalities of all sizes, from Canada's cities and rural communities, to northern communities and 20 provincial and territorial municipal associations. Together, they represent more than 90 percent of all Canadians from coast to coast to coast. Municipal leaders from across Canada assemble each year to set FCM policy on key issues.

Alberta's Rural Development Strategy: Current and Emerging Initiatives 2010 Update

The Conference Board of Canada has released a report entitled **Alberta's Rural Communities: Their Economic Contribution to Alberta and Canada**. Commissioned by Alberta Agriculture & Rural Development, the report seeks to identify the impact of rural communities on the province's economy. Details such as incomes, housing prices, and GDP per capita are included.

Hvenegaard, G. T., Hallström, L. K., Brand, K. L. P. (2019). **Implementation dynamics for sustainability planning in rural Canada**. *The Journal of Rural and Community Development*, 14(1), 54–76.

Events

If you have an event, announcement, or new report that you would like to see included in our monthly newsletter, please email **Linda** with the details.

Many of the events noted here have been postponed due to the Covid19 pandemic. We will update our events pages as soon as we receive new information on each event. Stay safe everyone.

April

Watershed 101 Webinar

15 April 2020, online

2020 Community Planning Association of Alberta Annual Planning Conference

27-29 April, 2020, Red Deer

May

U of A: Municipal Planning & Biodiversity Conservation

6 May, 2020, Camrose

Check website for updates

Canadian Water Network: Blue Cities 2020

7-8 May, 2020, Toronto, Ontario

Alberta Land Institute: Land Use 2020: A Place for Biodiversity Offsets

26-28 May, 2020, Banff

Save the Date

Mighty Peace Watershed Alliance Annual General Meeting

29 May 2020, Peace River

Save the Date

AWC Annual General Meeting

30 May 2020, Jasper

June

Tamarack Institute: Celebrating Neighbours: Measuring the Impact of ABCD

9-11 June, London, Ontario

RSVP by 10 June

North Saskatchewan Watershed Alliance (NSWA) AGM and 20 Year Anniversary Celebration

17 June 2020, Edmonton

August

Save the date

Watershed Planning and Advisory Councils (WPAC) Summit 2020

11-14 August

September

Save the Date

Alberta Professional Planners Institute (APPI) Annual Conference: Beyond Success: Growth by Failure

20-22 September, 2020, Lethbridge

Save the Date

Western Canada Water Conference and Exhibition 2020

22-25 September, Regina, Saskatchewan

Save the Date

Western Canada Water Conference and Exhibition 2020

22-25 September, Regina, Saskatchewan

October

Save the Date

Alberta Ecotrust Environmental Gathering: Lead Boldly

1-2 October, 2020, Edmonton

Save the Date

FCM's Sustainable Communities Conference

20-22 October, 2020, St. John's, NL

November

Save the Date

RMA 2020 Fall Convention & Tradeshow

2-5 November, 2020, Edmonton

Funding Opportunities

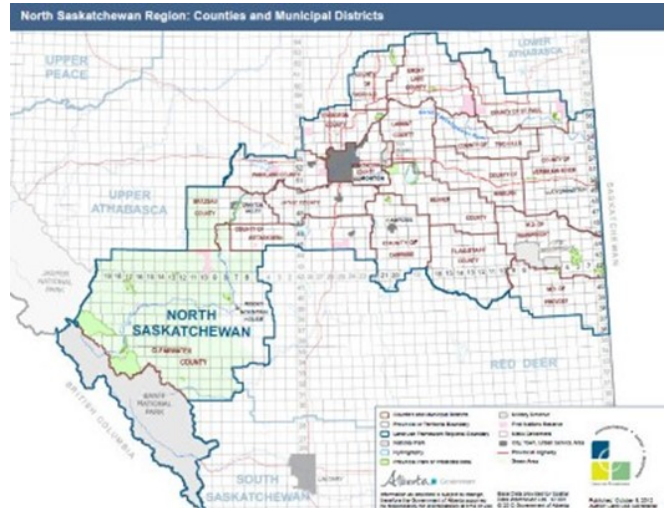
Check out the list of funding opportunities curated by the [Red Deer River Watershed Alliance](#)

Municipal Climate Change Action Centre: The [Alberta Funding Guide](#) provides information about available funding for renewable energy and energy efficiency projects available to municipalities in Alberta. This guide was created in collaboration with the Community Energy Association

North Saskatchewan Regional Plan (NSRP)

The North Saskatchewan Region contains a diverse landscape encompassing Rocky Mountain, rolling foothill and prairie parkland ecosystems. The North Saskatchewan Region includes headwaters forests that provide clean water to downstream communities, mountains foothills, and parkland that support a diversity of habitats that provide homes for species at risk and serves as a major source of recreation and tourism.

The North Saskatchewan Regional Advisory Council



Copyright © 2018 Alberta Land-use Knowledge Network, All rights reserved.
You are receiving this email because you opted in via our website.

Our mailing address is:
Alberta Land-use Knowledge Network
1176 Switzer Drive
Hinton, Alberta T7V 1X6
Canada