

Alberta Land-use Knowledge Network



May 2020

Land-use Planning Tools

The **Land-use Knowledge Network** was launched in 2011 and the **Land Use Planning Hub** in 2018. These two tools continue to grow and support research-based land use decision making throughout the province

If this newsletter was forwarded to you, please consider **subscribing** to our monthly publication.

Review **past issues** of our newsletter



Source: **Pixaby**

New on the Land Use Planning Hub

The **Land Use Planning Hub** is an informal network that supports the implementation of Alberta's regional plans. It is regularly updated with news, resources, and information on regional planning in Alberta. It was launched in 2018 as a complement to the **Land-use Knowledge Network**. Check out the resources and join the conversation.

For more information about the Land Use Planning Hub, contact the website's coordinator, **Jeff Wiehler**.

Tools for Regional Planning in Alberta

Determining the best use of land and resources is a complex decision that has been guided by regulations and policies since the early 20th century in Alberta. Land use planning in Alberta is guided by the Land-use Framework, the Alberta Land Stewardship Act and seven regional plans.

Here are some tools and resources on regional planning in Alberta.

Land Use Planning Hub

The Land Use Planning Hub is an informal network that supports the implementation of Alberta's regional plans through resources and articles.

AUMA Municipal Planning Hub

From the historical context to recent updates, the AUMA Municipal Planning Hub is an excellent resource for anyone that is interested in planning in Alberta.

History of planning in Alberta

Reviewing the history of land use policies in the province provides the context to understand and best apply the latest iteration of regional planning in Alberta.

Land-use Knowledge Network

The Alberta Land-use Knowledge Network is the source of information related to land use planning in Alberta.

Land use planning courses and training

Online and in-person workshops, courses and academic programs related to land use planning in Alberta.



Interactive Map – Alberta Land-use Framework Region Explorer

Use this interactive map to explore the seven regions outlined in Alberta's Land-use Framework. Includes the status of the regional plans and data by region.



Information Hub – AUMA Municipal Planning Hub

The **AUMA Municipal Planning Hub** is an information hub that provides a comprehensive review of land use planning topics in Alberta.



Webinar – Linking Land Use Planning and Parks Practices (May 20)

This **free webinar** from the **Alberta Professional Planners Institute (APPI)** will dive into the connection between land use planning and parks from 1960 to 2010 in the Edmonton region.



Tools & Resources – Community Conserve

Community Conserve helps solve the common conservation and environment dilemmas that municipalities face. By encouraging planners, municipal employees and councillors to submit questions or issues, Community Conserve offers support for real-life problems.



An Ongoing Request for Feedback

We would appreciate your input on what we can do to provide the tools and resources on topics that align with your 2020 land use planning priorities. Please complete our **two-question poll** so we can customize our planning resources to fit your needs.

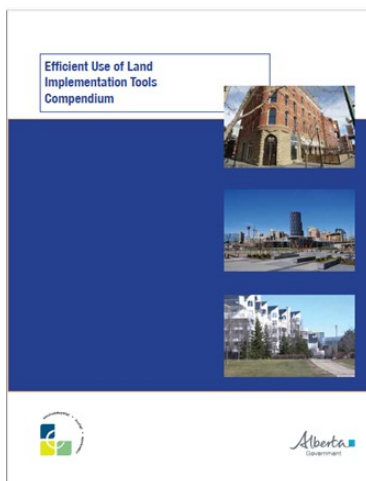
Resources

The **Land-use Knowledge Network** is a repository of a wide variety of resources to support your land use and planning research. Check out these items...



What is a Land Use Plan?

A land use plan is a vision for how we want our city to grow and change. Plans can vary in scale—some land use plans apply to all of Edmonton, while others are focused on a small part of a neighbourhood. This booklet will explain more about the different types of land use plans used in Edmonton.



Efficient Use of Land Implementation Tools Compendium

To help promote the efficient use of land, the Government of Alberta has completed a review of tools and best practices by municipalities in Alberta and other jurisdictions. The results of this review have been compiled into the *Efficient Use of Land Tools Compendium* to serve as a resource for land-use planners, land users, and decision-makers involved in land management planning and decision-making on public and private land.

Land Tools Compendium (Scholarly References)

Land Tools Compendium-**Agriculture**

Land Tools Compendium-**Eco-Development**

Land Tools Compendium-**Forestry**

Land Tools Compendium-**Green Infrastructure**

Land Tools Compendium-**Hazards**

Land Tools Compendium-**Learning Tools & Programs**

Land Tools Compendium-**Sustainability**
 Land Tools Compendium-**Adaptive Reuse**
 Land Tools Compendium-**Accessibility**
 Land Tools Compendium-**Urban Growth**
 Land Tools Compendium-**Low Impact Development**
 Land Tools Compendium-**Transit**



Zoning and Land-Use Tools in the Wildland-Urban Interface

This edition of Zoning Practice discusses how key characteristics of development in the WUI influence wildfire risk, and it highlights a range of land-use and development regulations that affect the extent, design, and ultimate safety of WUI development. These regulatory tools include zoning overlays, transfer of development rights, WUI codes, subdivision controls, defensible space regulations, landscaping standards, use-specific standards, and code enforcement.



Achieving Regional Planning Outcomes: Efficient Use of Land (video: Joannes Wong)

Joannes Wong discusses the importance of efficient use of land for regional planning. He explains the value of using public and private land in a way that minimizes the footprint of human activities on Alberta's landscape.



Canadian Sustainability Plan Inventory

The University of Alberta's Centre for Sustainable Rural Communities (ACSRC) is proud to announce the launch of the Canadian Sustainability Plan Inventory (CSPI). This searchable online inventory is the most comprehensive collection of sustainability plans in Canada.

The CSPI can be accessed at www.augustana.ualberta.ca/cspi/

Applied Land Use Planning Certificate

If you see a program on our website announced as an in-person or downtown Edmonton offering, please disregard the format—but not the program. Our spring and summer offerings have been converted to remote delivery platforms. Register for a course online or apply to a program via email, and keep learning!

Overview

The University of Alberta's Applied Land Use Planning (ALUP) program supports the learning needs of professionals in the areas of municipal government planning, development, and bylaw enforcement.

Designed to match the complexity of a variety of municipal government planning needs, this program allows students to use theories and models as a means to address problems, apply critical thinking, and develop a cooperative spirit for their day-to-day professional activities.

APPLIED LAND USE PLANNING

- **Land Use and Subdivision Design**
Begins May 13
- **Urban Environments**
Begins June 1

News Items

SEAWA is looking for volunteers to help with riparian restoration plant care for the summer. Starting May 4, they will need help with watering, weeding, mulch application, and repair/re-installation of plant cages. Please reach out to them by email: executive@seawa.ca or phone: 403-580-8980.

Finding Water: Healthy Land, Healthy Stream (Documentary)

A non-profit group of southern Alberta land owners, the Livingstone Land Owners Group released a new documentary video on the sources of Canada's prairie rivers.

'Finding Water: Healthy Land, Healthy Stream' is an exploration of the headwaters of the Oldman River on the eastern slopes of the Canadian Rockies.

This 25-minute documentary film is both a celebration of some of the most beautiful streams anywhere, and a cautionary warning about their vulnerability to our use of the surrounding land.

Events

If you have an event, announcement, or new report that you would like to see included in our monthly newsletter, please email **Linda** with the details.

Many of the events noted here have been postponed due to the Covid19 pandemic. We will update our events pages as soon as we receive new information on each event. Stay safe everyone.

May

Event postponed, will update when more information is posted

Alberta Land Institute: Land Use 2020: A Place for Biodiversity Offsets

26-28 May, 2020, Banff

June

Date changed and sessions are now completely online

Canadian Water Network: Blue Cities 2020

1-4 June, 2020, online

Postponed to June 2021

Tamarack Institute: Celebrating Neighbours: Measuring the Impact of ABCD

9-11 June, London, Ontario

Celebration has been postponed, AGM is now online

North Saskatchewan Watershed Alliance (NSWA) AGM and 20 Year Anniversary Celebration

24 June 2020, online

September

No changes announced yet

Alberta Professional Planners Institute (APPI) Annual Conference: Beyond Success: Growth by Failure

20-22 September, 2020, Lethbridge

Save the Date, no changes announced yet

Western Canada Water Conference and Exhibition 2020

22-25 September, Regina, Saskatchewan

October

Cancelled

Alberta Ecotrust Environmental Gathering: Lead Boldly

1-2 October, 2020, Edmonton

Save the Date, no changes announced yet

FCM's Sustainable Communities Conference

20-22 October, 2020, St. John's, NL

November

Save the Date, no changes announced yet

RMA 2020 Fall Convention & Tradeshow

2-5 November, 2020, Edmonton

Funding Opportunities

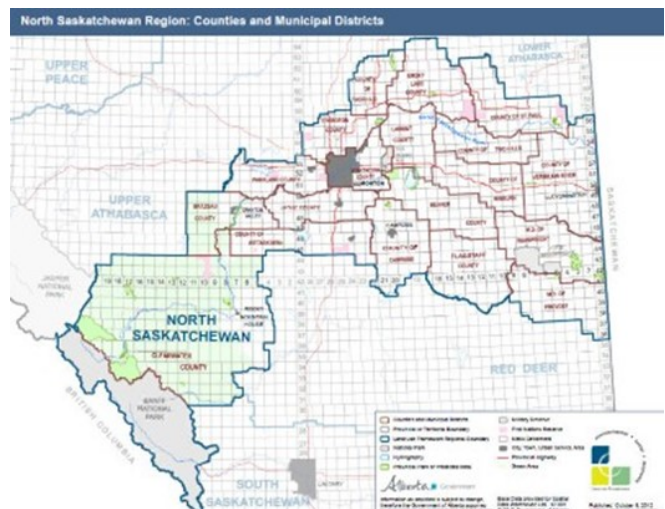
Check out the list of funding opportunities curated by the **Red Deer River Watershed Alliance**

Municipal Climate Change Action Centre: The **Alberta Funding Guide** provides information about available funding for renewable energy and energy efficiency projects available to municipalities in Alberta. This guide was created in collaboration with the Community Energy Association

North Saskatchewan Regional Plan (NSRP)

The North Saskatchewan Region contains a diverse landscape encompassing Rocky Mountain, rolling foothill and prairie parkland ecosystems. The North Saskatchewan Region includes headwaters forests that provide clean water to downstream communities, mountains foothills, and parkland that support a diversity of habitats that provide homes for species at risk and serves as a major source of recreation and tourism.

The North Saskatchewan Regional Advisory Council





Copyright © 2018 Alberta Land-use Knowledge Network, All rights reserved.
You are receiving this email because you opted in via our website.

Our mailing address is:
Alberta Land-use Knowledge Network
1176 Switzer Drive
Hinton, Alberta T7V 1X6
Canada